

OUTDOOR SCOREBOARD
8318

Baseball

BALL	3	STRIKE	2	OUT	2	INN	1
GUEST		RUNS	3	HITS	7	ERRORS	1
HOME		RUNS	3	HITS	9	ERRORS	0

OVERALL DIMENSION

8' high x 18' wide x 4.7" deep (including built-in mounting channel).

INFORMATION DISPLAYED

Home and Guest Score, Ball, Strike, Out, Inning, Hits, Errors.

DIGITS

18", 16" Bright Red, 7-Segment LEDs.

INDICATORS

None.

CAPTIONS

White vinyl letters.

HORN

Horn not included. External 100 dB Vibrating Horn or 120dB Trumpet Horn are available.

CONSTRUCTION

Extruded aluminum frame, .093" thick. Faces made from 22ga galvalume steel with shatter proof polycarbonate windows. Backs made from 22ga galvanized steel.

STANDARD COLORS
(Custom Colors Available)



Black, Navy, Blue, Light Blue, and Red have a Kynar® finish, other standard and custom colors are powder coated or painted enamel.

ELECTRONICS

100% solid state, microprocessor controlled system.

SERVICING

Front access for ease of servicing. Plug in modules for ease of replacement.

MICROPROCESSOR CONTROL CONSOLE



Sold separately. Extruded Aluminum, high impact low profile microprocessor control console, latest state of the art, user friendly. Size: 13.25" wide x 5" high x 9" deep. Weight: 6 lbs. Microprocessor to be supplied with 25 feet of cable (hardwire). Microprocessor control console with membrane keyboard provides for direct entry of all information. Radio Control is available.

JUNCTION BOX

One outdoor rated junction box, 5" x 3" with cover and ethernet cable. (Hardwire)

DATA CABLE

Twisted pair, direct burial, RJ45 Connectors (Hardwire).

POWER REQUIREMENTS

115/230 VAC. 50/60 Hz. Minimum one 20A circuit is recommended.

INSTALLATION

Base model typically installed on two posts. Each add-on typically requires an additional post. Mounting kits are supplied with scoreboard.

NOTE: Number of posts must be determined locally by licenced engineer.

WEIGHT

Base Model: Net 800 lbs / Shipping 1115 lbs.
PC & DL Models: Net 1064 lbs / Shipping 1420 lbs.
PCDL Model: Net 1330 lbs / Shipping 1725 lbs.

WARRANTY

Five year guarantee against defects in materials and workmanship. Factory repair service for parts in warranty. Union label. UL Certified.

STANDARD VARIATIONS - Add suffix to model number in order that they appear below (see examples on next page)

Model + PC

Additional 8' high x 6' wide cabinet added to display Pitcher and Pitch Count.

Model + DL

Additional 8' high x 6' wide cabinet added to display At Bat and On Base Indicators.

Model + RV2


Radio upgrade. 2.4 GHz spread spectrum, 1500' expected range.

EXAMPLES OF VARIATIONS

This page shows samples of boards within the 8318 family. Boards that fall outside of these options will be considered custom and will require additional engineering.

PITCHER		BALL 3 STRIKE 2 OUT 2 INN 11			
GUEST	HOME				
14	18				
PITCH COUNT		RUNS	HITS	ERRORS	
GUEST	HOME	GUEST			
104	39	3	7	1	
		HOME	3	9	0

8318PC - 8' high x 24' wide, typically installed on 3 posts.

BALL 3 STRIKE 2 OUT 2 INN 11				AT BAT 23	
GUEST		RUNS 3	HITS 7	ERRORS 1	
HOME		3	9	0	
				 ON BASE	

8318DL - 8' high x 24' wide, typically installed on 3 posts.

PITCHER

GUEST

14

HOME

18

PITCH COUNT

GUEST

104

HOME

39

BALL

3

STRIKE

2

OUT

2

INN

11

GUEST

3

HITS

7

ERRORS

1

HOME


3

9

0

AT BAT

23

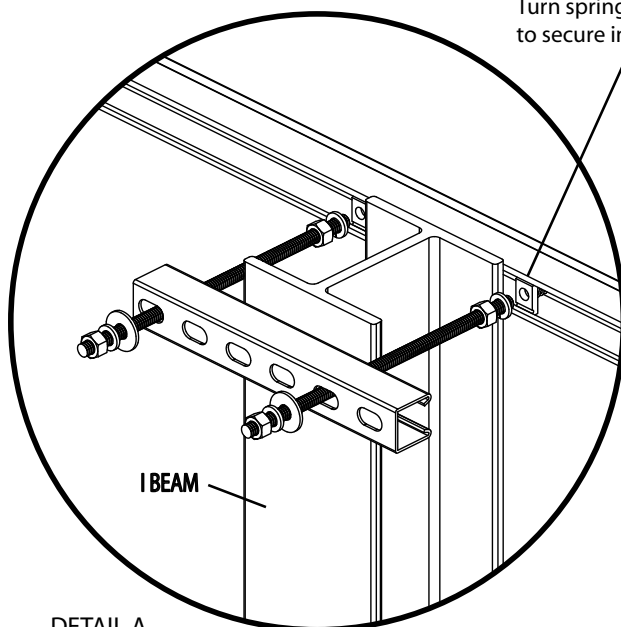
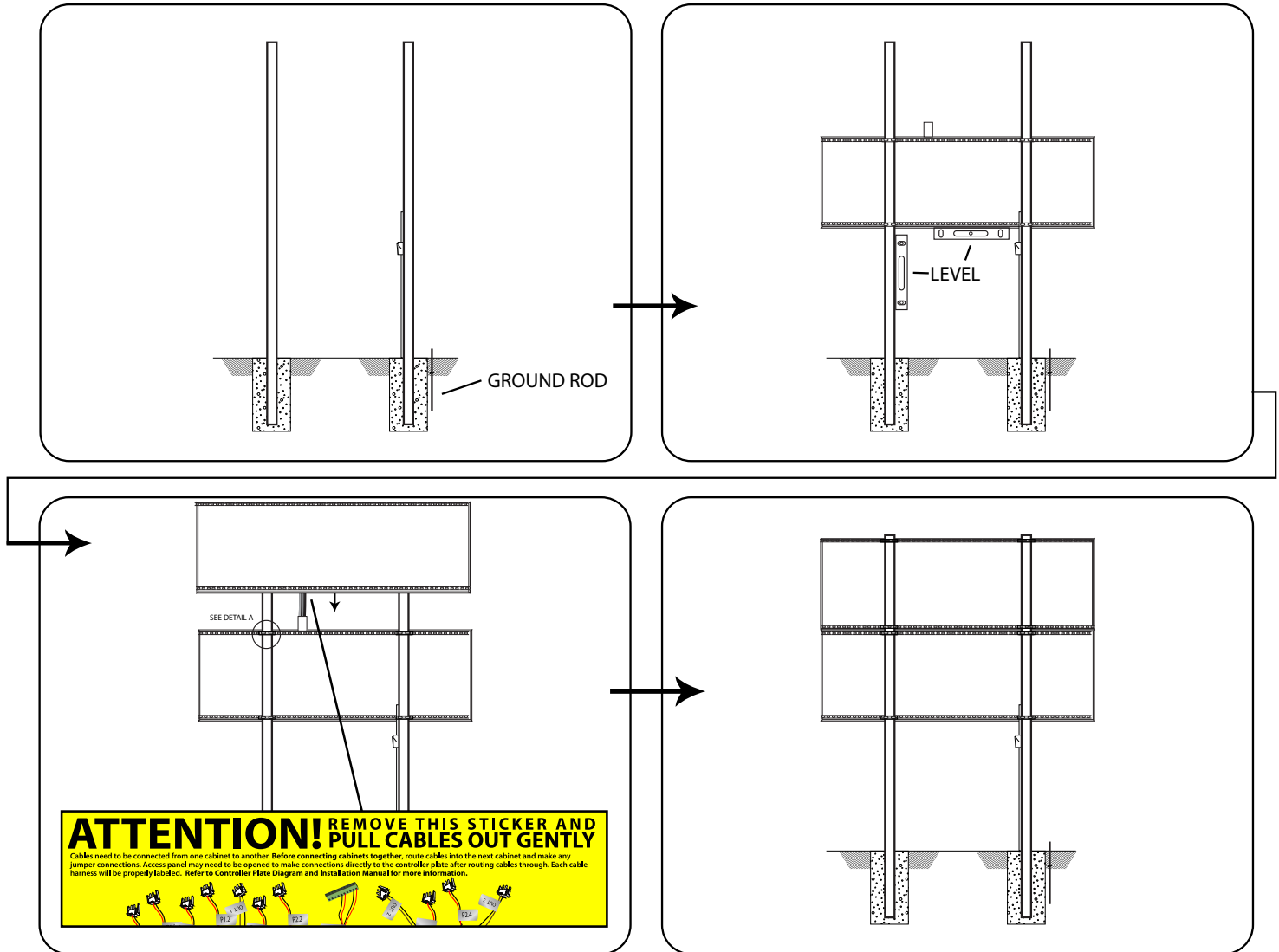


ON BASE

8318PCDL - 8' high x 30' wide, typically installed on 4 posts.

Typical Double-Cabinet Scoreboard Installation Illustration

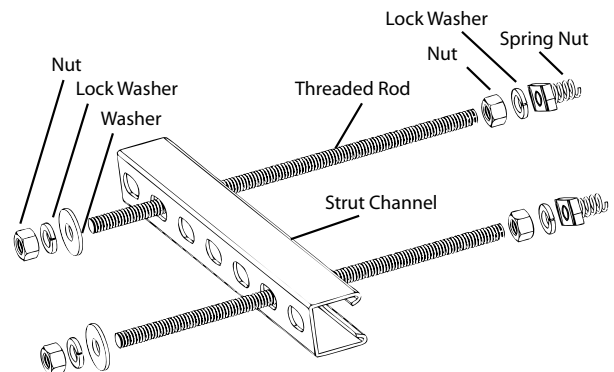
NUMBER OF POLES SHOWN ONLY FOR REFERENCE. MUST BE DETERMINED LOCALLY BY LICENCED ENGINEER.



Turn spring nuts clockwise to secure into strut channel.

Mounting Kit

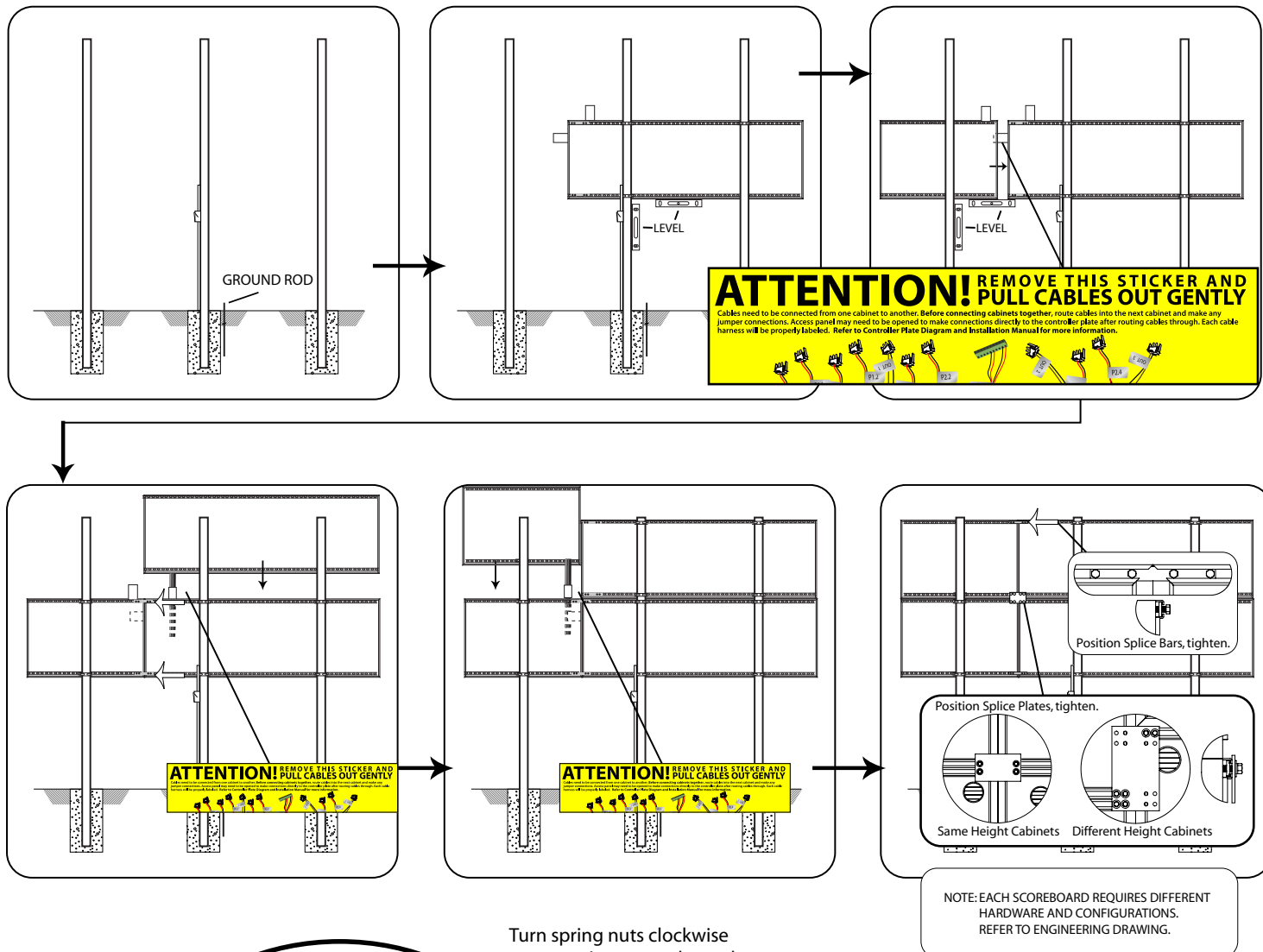
Quantity of kits depends on board and number of poles required. Installed at every point where a pole and a strut channel intersect. Local ordinances, soil conditions and wind load requirements may require additional structure.



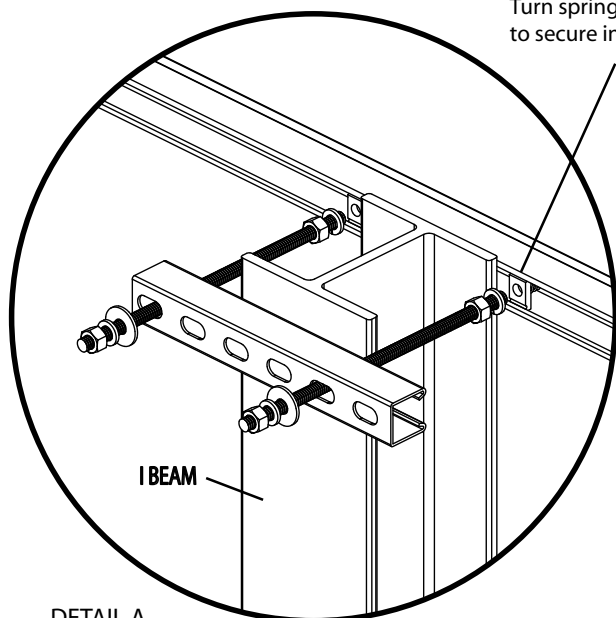
DETAIL A.
Pressure hold scoreboard cabinets to poles.
Secure with weld.

Typical Multi-Cabinet Scoreboard Installation Illustration

NUMBER OF POLES SHOWN ONLY FOR REFERENCE. MUST BE DETERMINED LOCALLY BY LICENCED ENGINEER.



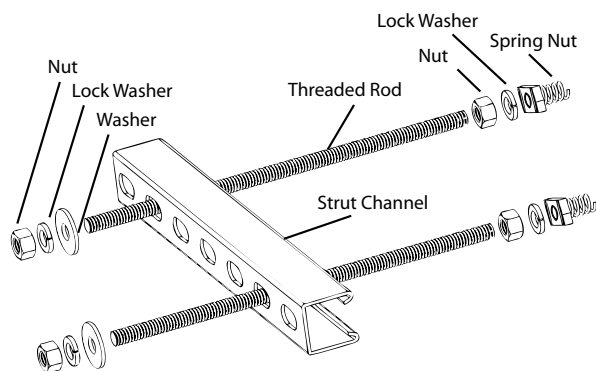
Turn spring nuts clockwise to secure into strut channel.

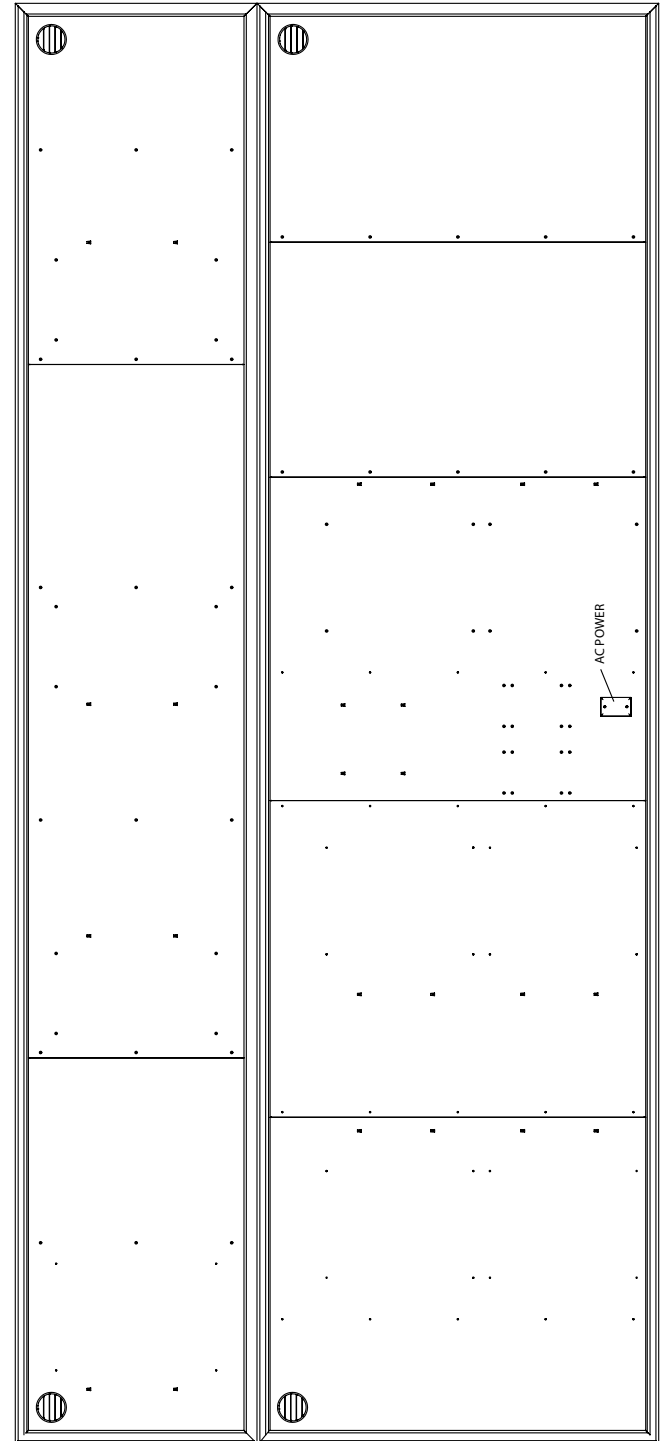
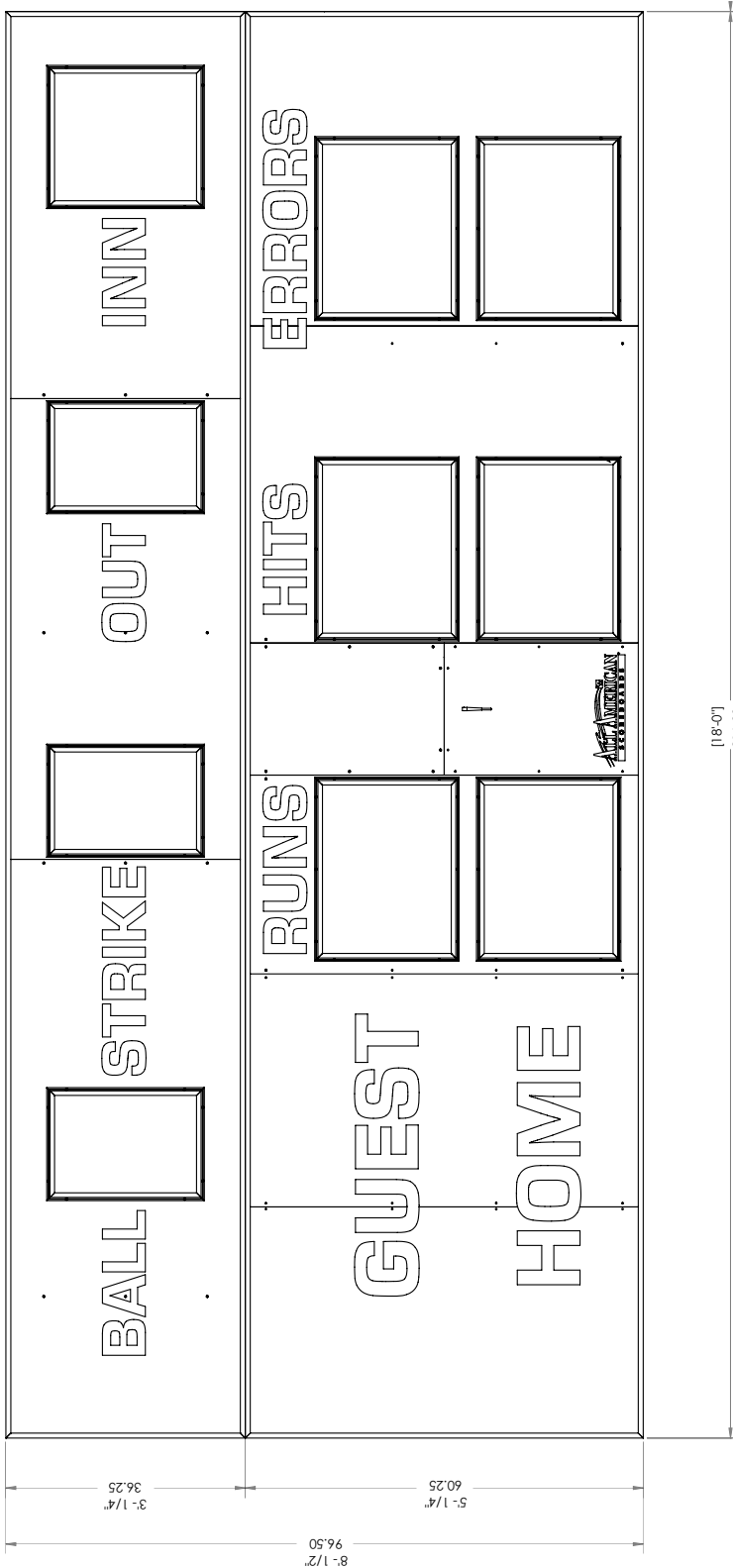


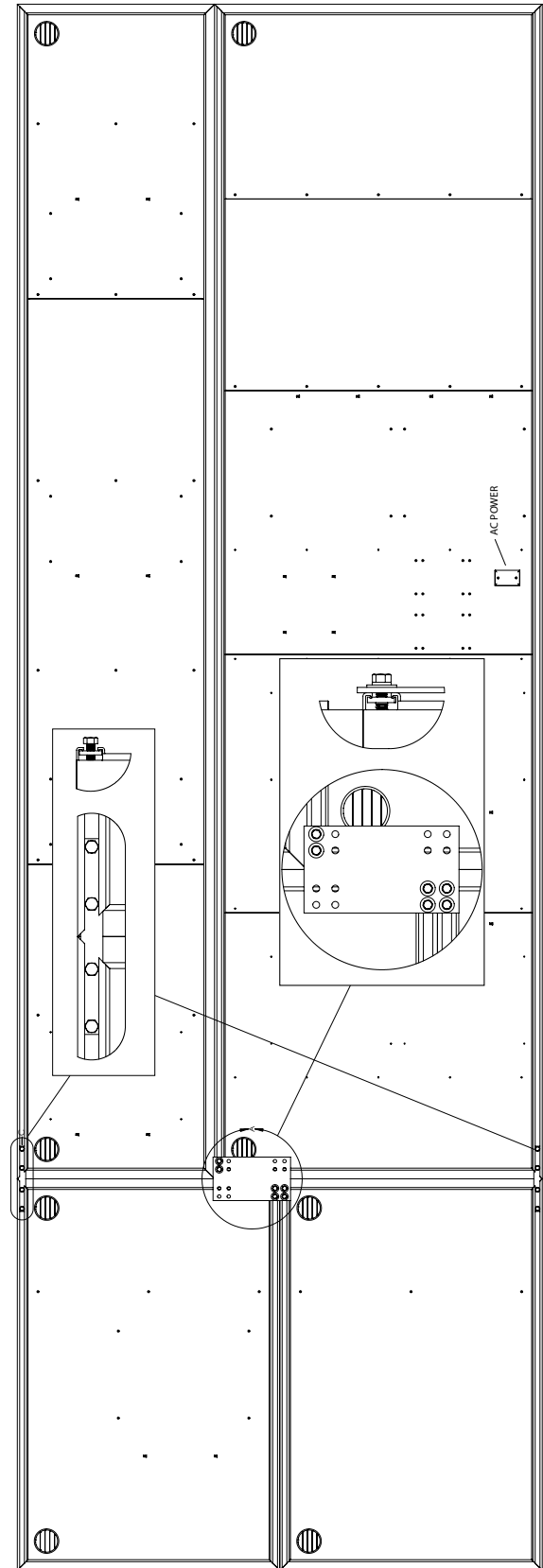
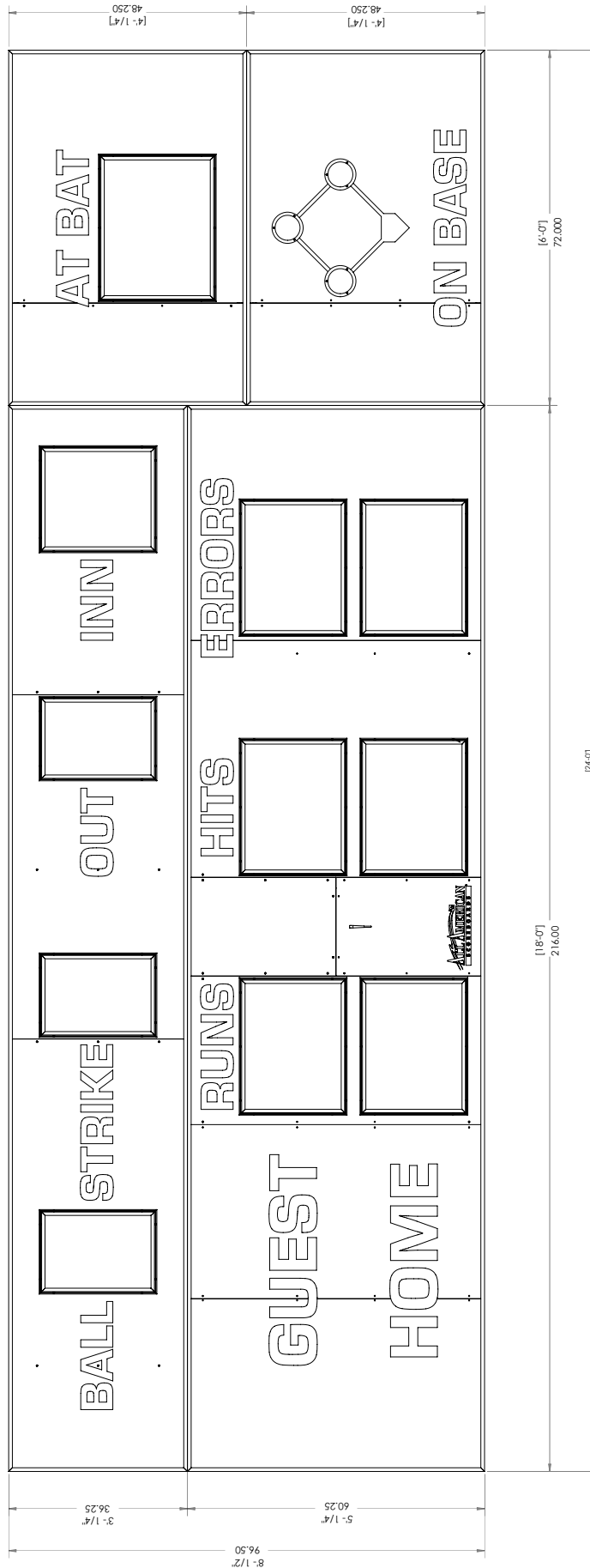
DETAIL A.
Pressure hold scoreboard cabinets to poles.
Secure with weld.

Mounting Kit

Quantity of kits depends on board and number of poles required.
Installed at every point where a pole and a strut channel intersect.
Local ordinances, soil conditions and wind load requirements may require additional structure.

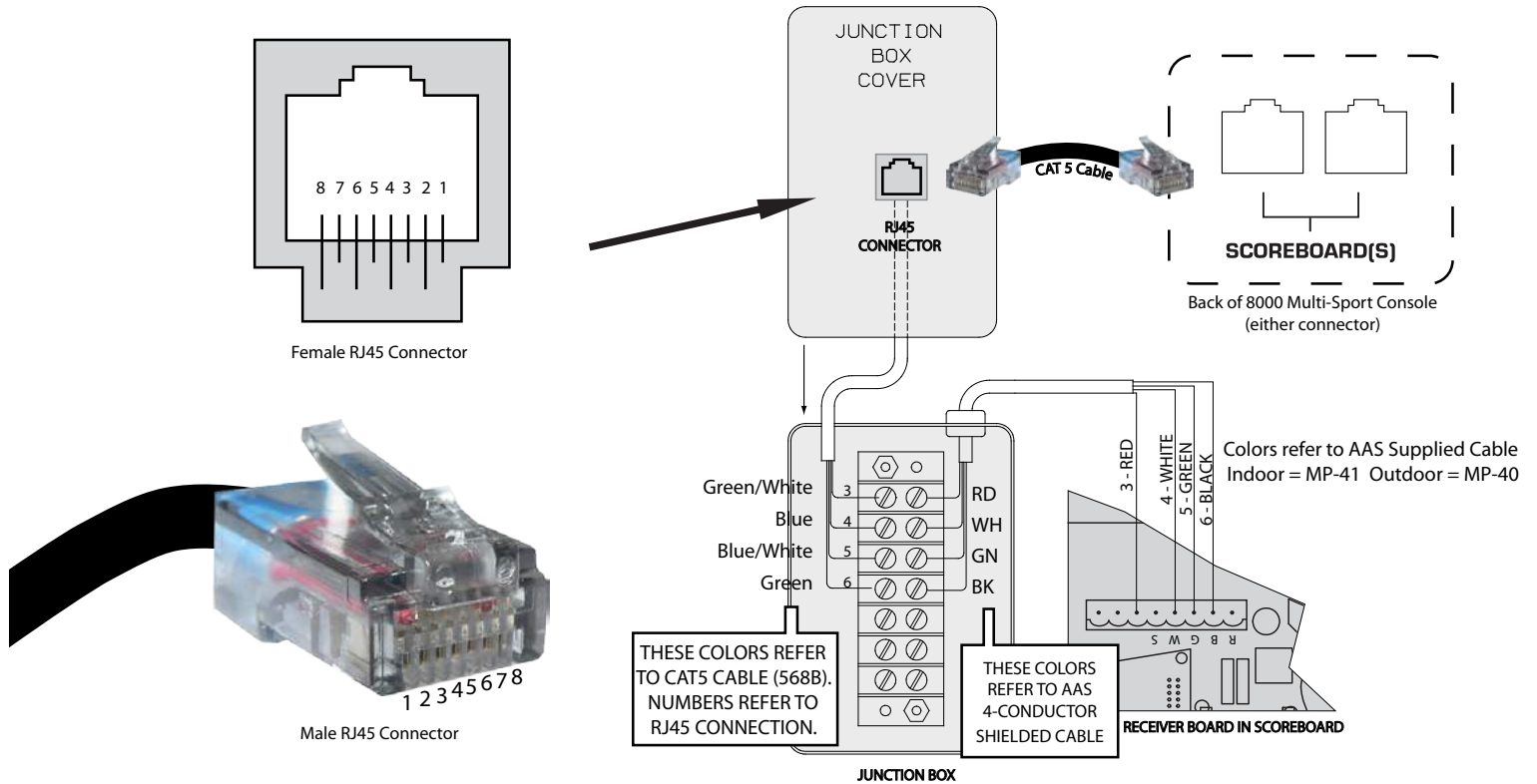






Hardwire Scoreboard Wiring

With a Standard Junction Box



Wiring a Supplemental Display

With a Single Junction Box

